



CubeWerx®

Company Profile

Company Information

www.cubewerx.com

Who We Are

A widely recognized expertise in the development of sophisticated product components for the integration, storage and management of geospatial data, combined with an unwavering commitment towards the development and implementation of Open Web Services specifications to free up the exchange of geospatial information on the Internet, have solidified CubeWerx's reputation as a leading-edge provider of software products for serving spatial data on the Internet.

The Origins

Although CubeWerx was founded in 1996, its core team of engineers and architects have been working together for well over 15 years, originally as members of a strategic research and business unit at Oracle, responsible for developing and bringing the Spatial Data Option (Oracle Spatial) to market.

A Vision Becomes Reality

Global Geospatial Infrastructure requirements led CubeWerx to develop spatial data warehouse technology packaged into the CubeSTOR® software product.

Recognizing early on the importance of the Web and its impact on the Global Geospatial Infrastructure, CubeWerx focused its efforts on the implementation of new Web Services products, based on open specifications for accessibility, scalability and interoperability.

Open Standards Organizations

CubeWerx has developed and released a complete family of SCOTS (Standard Commercial Off-The-Shelf software) products, based on Open Geospatial Consortium (OGC) specifications responding to Geospatial Information requirements.



In 2003, CubeWerx was awarded the prestigious Kenneth G. Gardel Award by the OpenGIS® Consortium in recognition for its outstanding contribution to advancing the vision of geographic information fully integrated into the world's information.



CubeWerx

Company Information

OGC® Specifications

As a member of the OGC and the Canadian Geospatial Data Infrastructure, CubeWerx has played an active role in standards development, including:

- Editor of Web Feature Server (WFS) specification
- Editor of Styled Layer Descriptor (SLD) specification
- Editor of Filter Encoding specifications
- Coeditor of Web Map Server (WMS) specification
- Coeditor of Web Catalog Services 2.0 specification

OGC® Test beds

CubeWerx has played a key role in the successful completion of the following test beds:

- Open Web Mapping Testbed Phase 1 and 2
- Geospatial Fusion Services Testbed Phase 1
- Open Web Service Testbeds Phases 1 and 1.1
- Open Web Services GeoDRM Testbed
- Open Web Services Test bed Phase 2 (OWS1.2)

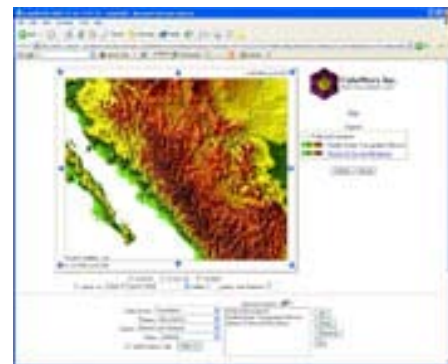
OGC® Pilot Projects

CubeWerx has played a key role in the successful completion of the following pilot projects:

- Critical Infrastructure Protection Initiative Phase 1 (CIPI)
- Geospatial Information for Sustainable Development (GISD-ICP)
- Military Pilot Project Phase 1 (MPP1)
- Multi-Hazard Mapping Initiative (MMI)
- Upper Susquehanna-Lackawanna (USL) Pilot Project
- GeolINT Interoperability Demonstrator
- Spatial Interoperability Demonstrator Project (ASIBA/OGC-A)
- Technical advisor to GeoConnections (2007-2010)

Some Customers

European Space Agency, NASA, Space Imaging, US-Army Topographic Engineering Center (TEC), Department of National Defense - Canada, Canadian Topographic Institute - Sherbrooke (CITS), Canadian Centre for Remote Sensing, Government Telecommunications and Informatics Services (GTIS), United States Geological Survey (USGS), Canadian Forest Services, Health Canada, Department of Fisheries and Oceans - Canada



CubeWerx develops the essential building blocks required by any organization for the storage, management, access and distribution of Geospatial Data.



CubeWerx®

15 Rue Gamelin, Suite 506
Gatineau, Quebec J8Y 6N5
Canada

North American sales

sales@cubewerx.com
Telephone: (819) 771-8303
Facsimile: (819) 771-8388
www.cubewerx.com

United States Resellers:

Geoleaders LLC
Lake Ridge, Virginia
Tel: 703.491.9543
Fax: 703.491.0873
contact@geoleaders.com
www.geoleaders.com

Australia and New Zealand and Asia Pacific sales:

CubeWerx Australia Pty Ltd
Brad Spencer, General Manager
ABN: 37 115 163 285
Mob: +61 (0)404 841 131
Tel/Fax: +61 (0)2 9481 7024
brad.spencer@cubewerx.com.au
www.cubewerx.com.au